

AUTOMATED veterinary
HEMATOLOGY ANALYZER
AHA5200vET



**Animal
Wellness
Care**



**5
Part**

**60
T/H**





Species of Animal

- Dog, cat, pig, cow, sheep, goat, horse, monkey, mouse, rabbit, pot-bellied pig, camel, buffalo, 2 self-programmed animals.

Technical Parameters

25 Whole Blood Reportable

- WBC, LYM%, LYM#, NEU%, NEU#, MON%, MON#, EOS%, EOS#, BAS%, BAS#, RBC, HGB, HCT, MCV, MCH, MCHC, RDW-SD, RDW-CV, PLT, PDW, MPV, PCT, P-LCR, P-LCC

Performance

Parameter	Precision (CV%)
WBC	≤4.0
RBC	≤2.0
HGB	≤2.0
PLT (10 ³ /μL)	≤8.0
MCV	≤3.0

Specification

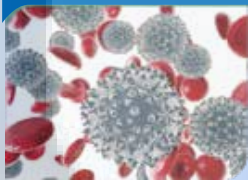
Model	AHA5200VET
Sample Mode	Whole Blood (Venous/Capillary) Pre-dilution
QC Methods	L-J QC, X-B QC
Screen Type	10.4 inch Resistive Screen
Weight	21 kg
Principles	Laser Scatter in Flow Cytometry Classic Electrical Impedance Method Mature Photoelectric Colorimetry
Sample Volume	Venous blood: 15 μL Capillary blood (Pre-dilution): 20 μL
Data Storage	10000
Power Supply	220V±22 ~ AC, 50±1 Hz Larger voltage range can be supported
Dimension	328 mm (L) x 471 mm (W) x 446 mm (H)

A Convenient and Fantastic Diagnostic Tool for Your Pets or Animals

Complete Blood Count (CBC) is a routine blood test performed on pets to provide objective information about the general health status of an animal. The objective data obtained from a CBC can indicate the presence of many forms of diseases and can be helpful in monitoring ill animals undergoing therapy

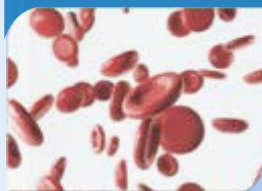
Complete Blood Count Applications

WBCs



Providing evidence for diagnosis of inflammation or allergic diseases of animals, such as parasitosis, canine allergic bronchitis, cat asthma, allergic gastroenteritis, etc.

RBCs



Aiding in diagnosing different kinds of anemia and polycythemia.

Platelets



Aiding in diagnosing thrombocytosis. Primary thrombocytosis: essential thrombocythemia, myelodysplastic syndrome, etc. Secondary thrombocytosis: high platelets caused by acute infection, hemorrhage, hemolysis, etc.

Humanization

- ✓ Venous blood sample volume: 15 μ L
- ✓ Less pain during blood collection
- ✓ Sample type: venous blood / capillary blood (pre-dilution mode) to meet different needs

Technology Innovation

- ✓ Intelligent scatter classification technology
- ✓ Curve-fitting&floating threshold technique

Laser Scattering Method

- ✓ Obtain information on the size and internal composition of WBC and classify them

Blood Cell Overlap Correction Technology

- ✓ Make accurate judgments when cells overlap through the well

Digital Filtering

- ✓ Effectively remove interference from impurity signals

Multi-Segment Counting

- ✓ Better exclude biased results and improve test accuracy

Optical Method for BASO

- ✓ Avoid errors caused by the partial overlap of basophil and leukocyte

Smallest Gem Hole

- ✓ The industry's smallest gem hole of 50 μ m

High Efficiency and No Residue Display

- ✓ 60 T/H
- ✓ No hematology diluent or lysis reagent residues
- ✓ 10.4" capacitive touch screen, improve the sensitivity of touch operation
- ✓ Support operation with rubber gloves